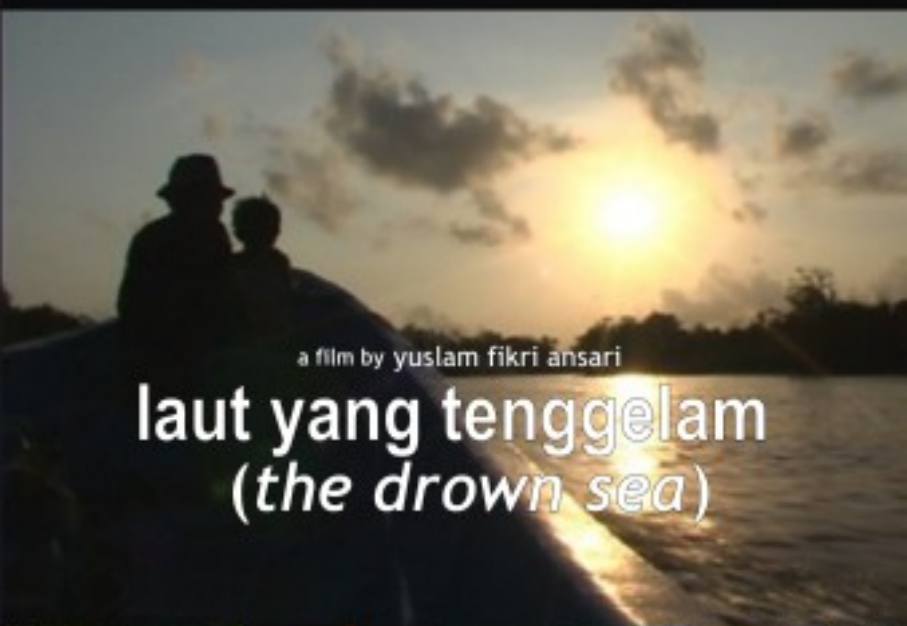


Behind the Scenes  
The Making of  
"Laut yang Tenggelam"

a Film about the Life of the Village of Ujung Alang  
in Kampung Laut, off the south coast of Java - Segara Anakan



a film by yuslam fikri ansari

**laut yang tenggelam**  
*(the drown sea)*



e-mail : kopidokumenter@yahoo.co.id

© 2006

komunitas perfilman intertekstual production in collaboration with kbh purwokerto  
presents ayuslam fikri ansari (yufik) film "laut yang tenggelam" ("the drown sea")

research by siti fikriyah, dhini y.s. film editing by m.s. firdaus, yufik  
cinematography by suherman, yufik executive producers m.s. firdaus, hapsari  
co-producer hapsari producer m.s. firdaus directed by yufik

## ***Dandangula Kampung Laut*** ***Folksong of Kampung Laut***

*Keluargo Kampung Laut iki*  
*Asaliro soko projo*  
*Miturut da eyang buyute*  
*Pakotan kang satuhu*  
*Ujare poro winasih*  
*Ngupoya sadraning projo*  
*Lumintung hurip pituhuni*  
*Anakan bakal ngupoyo*  
*Usi kang mo sudi*  
*Tumuli temuning wargo*

*This Family of Kampung Laut*  
*Is a community*  
*That follows the pathway of their ancestors*  
*Balancing steps*  
*Advised by the wise*  
*One needs to seek the grandeur of life*  
*Through faith*  
*From generation to generation*  
*We strive to meet the Will of the Almighty*  
*Who unifies the community*



# Foreword



*Laut yang Tenggelam* (The Drown Sea) was produced by Komunitas Perfilman Intertekstual (KoPI) in 2006. This film was made possible with the collaboration of KoPI, Purwokerto Legal Aid, and Community of Ujung Alang, Kampung Laut, Sagara Anakan. The Purwokerto Legal Aid contributed legal assistance to the women of Ujung Alang Kampung Laut.

The location of the film covers Sagara Anakan and its surroundings, especially the village of Ujung Alang, Kampung Laut, Cilacap and Nusakambangan Island. Shooting began in 2005 and was completed in October 2006.

The film was inspired by the phenomenon of emerging land off the coast of Segara Anakan lagoon that has become the outlet of small rivers from West and Central Java.

The accumulation of sedimentation in Sagara Anakan has transformed water into land. These emerging lands are around a lagoon attached to Nusakambangan Island, which is still used as a prison.

This behind the scenes of *Laut yang Tenggelam* is an introduction to the film which was shot in Ujung Alang, Kampung Laut, Sagara Anakan. We learned a lot and many of the lessons are hopefully interesting to others.

Regards,  
**Moh. Syafari Firdaus**  
**Producer/Eksektive Producer**

## Director's Note



*Laut yang Tenggelam* is the sixth production and the first long documentary that I have made.

Up until today, I have always produced films related to agrarian issues, including this *Laut yang Tenggelam*.

Nevertheless, my biggest intention in producing this film was to record and re-tell the stories about the daily life of Kampung Laut community when they struggle to address various challenges in their daily life.

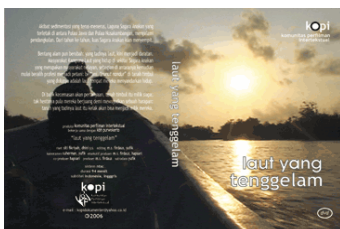
This film is a collaboration of Komunitas Perfilman Intertekstual (KoPI), Purwokerto Legal Aid and the community of Ujung Alang, Kampung Laut. The production was done in participatory fashion by involving various communities in Kampung Laut.

The community's active participation yielded strong ownership of the film as the intellectual property of Kampung Laut. It is expected that they can use the film as a tool to reflect and recognize their problems. We tried hard to have the community themselves to tell their own stories. The film crew reorganized the stories told by the communities in their own language and gestures.

Finally, I hope that this film can inspire those who watch it.

Regards,  
**Yuslam Fikri Ansari (Yufik)**  
**Director**

# Synopsis



Produksi **2006**  
**Komunitas Perfilman**  
**Intertekstual (KoPI)** bekerja  
sama dengan **Kantor Bantuan**  
**Hukum (KBH) Purwokerto** dan  
**Masyarakat Ujung Alang,**  
**Kampung Laut, Sagara**  
**Anakan.**

Sutradara **Yufik**  
Produser **M.S. Firdaus**  
Co-produser **Hapsari**  
Prod. Pelaksana **M.S. Firdaus,**  
**Hapsari**  
Riset **Siti Fikriyah, Dhini Y.S.**  
Kameramen **Suherman, Yufik**  
Editor **M.S. Firdaus, Yufik**

Durasi **94 menit**  
Bahasa **Indonesia, Jawa, Sunda**  
Subtitel **Indonesia, Inggris**

Sedimentation in Sagara Anakan Lagoon has created new land between Java Island and Nusakambangan Island. For the last decades, the Sagara Anakan lagoon has shrunk significantly as it has filled with silt.

The seascape has changed from lagoon to terrestrial. Some from the fisher community have become farmers, cultivating the land even though the status of these emerging lands is questionable.

The new farmer community maintain their struggle to become the owners of the emerging lands.



# Kampung Laut, Sagara Anakan At Glance

Kampung Laut. Village custom says the village was named for its location in the middle of the sea namely, Sagara Anakan.

Sagara Anakan is a lagoon in between Java Island and Nusakambangan Island. The community has long used this lagoon, which is a spawning area for many fish species.



Kampung Laut is located right in the middle of the lagoon. From the ship yard in Sleko, Cilacap, on the southern coast of Java, one can sail in a small fishing boat going south for about 1.5 hours to reach the village.



Kampung Laut constitutes of four villages; Ujung Alang, Ujung Gagak, Panikel, and Klaces. The growing population had upgraded this village into a sub-district with Klaces as its capital.

In the past, the fisher community of Kampung Laut was dependent on Sagara Anakan Lagoon. With an abundant fish catch, the villagers recalled their former lives as rich in fish.

However, the lagoon has been shrinking over time as a result of heavy sedimentation. Rivers flowing into the area carry about 6.2 million cubic meters of mud each year. Among other rivers that transport this mud are Citanduy, Cimeuneung, Cibereum, Kawungan-ten with their outlets in Sagara Anakan.

The sedimentation is changing the landscape. Sagara Anakan Lagoon is disappearing due to the emergence of dunes. In 1903, Sagara Anakan was 6,450 hectares and in 2003 the lagoon measured only 400 hectares.



The shrinking lagoon had affected livelihoods of the surrounding villages. Some of the villagers shifted their occupations from fishers to farmers, utilizing the emerging land as their fields. This shift of occupation was viewed as a survival act to sustain their lives.



Conflicts loomed following the phenomenon of emerging lands. There are many parties who have claimed and exercised power over these new lands such as the Nusakambangan Penitentiary, State Forestry Company, and the Conservation Management Body of Sagara Anakan with its main focus on mangroves.

The community was very aware about the uncertainties of the land status and they keep seeking for clarity on the status of ownership of the land:” Who is the lord of this land? What are the conditions to secure the farmers tenure to keep cultivating the land as their main source of living?”



Until now, there is no legal jurisdiction that administers control over emerging lands like in Sagara Anakan.

Today, the local people rarely refer to their village as an island village in the middle of the sea although they retain the name of the village as Kampung Laut that means the village in the middle of the sea.



## ***The Drown Sea:* A Proceeding Note**

The film *Laut yang Tenggelam* was inspired by Noer Fauzi who visited Ujung Alang, Kampung Laut. He met Siti Fikriyah who was conducting a participatory research through enhancing the women's organization in Ujung Alang Women's Collective in Kampung Laut. Noer Fauzi took further the case by supporting the women's collective to receive small funding from the Global Greengrants Fund (GGF).



Under this small grant, the women's collective proposed the use of film as a tool to organize the community. The community hoped that the film would empower them through collective exercises in identifying priority issues and challenges among the Kampung Laut community.

The site to be filmed covered Ujung Alang (Motean, Mangunjaya, and Ketapang). The women's activities covered by thus film were focused on the daily activities and community organizing work performed by the women's group of Ujung Alang.

Through this initial effort in film making, we as collective consisting of Komunitas Perfilman Intertekstual (KoPI) and Purwokerto Legal Aid proceeded our collaboration through our first visit in May to June 2005.



### **Initial Step**

We were optimistic from the beginning that we would be able to document and to re-tell the stories of the women's daily activities in Kampung Laut in the format of a film. Our objective was to obtain rich visual materials for education films.

Ms. Siti Fikriyah provided information that served as the foundation of thought and story framing to be focused on women and production modalities of the community. Such scope of filming would cover the redefinition of land use to enable the community to farm or cultivate the land, monitoring of forest clearing in Nusakambangan, and the



efforts to develop nursery of long term crop followed by community building efforts.



Gender mainstreaming at that point was not the flavour of that day as it was not pronounced significantly in the daily work of Ujung Alang Women's Group. Gender issue was used only as entry point whenever suitable.

The execution of the plans was slightly diverted. The information provided by

Ms. Siti Fikriyah about the activity of the women's group was completed already by the time the film crew arrived on the site. No activity remained to be filmed.

This development was very challenging for us in view of our intention in documenting the daily life based on our research findings. Through our observation, we noticed that the role of women in Ujung Alang was closely related to the complexity of problems that needed to be addressed in Kampung Laut.



This reality brought us to change our plans from our focus in women's role in Kampung Laut into a larger theme that was to document the daily life of the community in general. Consequently, we had to conduct research with camera, combining long shot footages while building story lines.



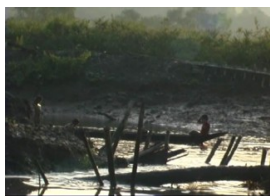
It was not an easy situation to manage. On the one hand we had to conduct the research to collect sufficient data and at the same time we were constrained with geographical distance from one site to the other. To reach one village to the other, we had to use boats that were slow and not always ready when needed. The challenges were more daunting as the

community had grown resistance in dealing with people who visit them under the big names of certain institutions.

We understood the reasons of community's reserved attitude after a series of exercises in problem analysis with the community. There were so many institutions that had led intervention programs in Kampung Laut. However, the community felt that almost all of these interventions did not yield any significant benefits. In reflection on this situation, we thought at one point that we might have done the same.



Another issue for the communities is the implementation of “Proyek Sudetan Citanduy” or river diversion project of Citanduy river that remains as empty promises. In the context of emerging land, the Kampung Laut community that initially created the land in Nusakambangan have to solve the problems with other institutions that were foreign for them.



There were various parties that imposed claimant rights for concessions to cultivate the emerging land that was cleared in the past years. Amid this uncertainties and conflicting interests, the community of Kampung Laut keeps their struggle to gain recognition of their tenure and rights to cultivate their fields on that emerging land.

## **Development Process**

Our research with camera on site found potential materials starting from environmental issues such as sedimentation, mangrove, forest and water problems; agrarian; education; spatial planning; and customary practice of Kampung Laut daily life. They brought to our attention that we could make a film that covers all of those issues to empower the Kampung Laut community.

We decided to employ a non-conventional film making approach by allowing community voices and perspectives through a series of informal discussions and interactions. The draft of the film was based on the research in the field and recent development on problem





analysis of Kampung Laut daily life was produced in 60 minutes duration (compared to our initial plan to make a 30 minute of educational film).

Our thought was to have the film screened and viewed by the Kampung Laut community. The screening would function as an entry point to common discussions that reflected their daily problems. We imagined that a Focus Discussion Group (FGD) would suit the purpose in Ujung Alang and Motean villages.

We expected that the film screening and the discussions would bring the memory back to their collective history to strengthen the relevance of their current situation and identity with their past in relation to Nusakambangan Island. We also hoped that the film would boost their spirit by presenting the portraits of their struggle and their hardship in clearing the emerging land and their conflicts with, among other, the Nusakambangan Penitentiary and State Owned Forestry Company.



In relation to the film making process and its content, we were hoping that the film could be completed by the perspectives of the Kampung Laut community. The draft film was ready to be discussed and reconstructed based on the community's verification and input.

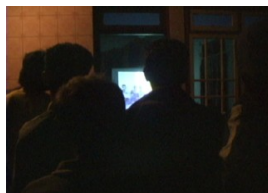


### **Film Screening**

From mid June to August 2005 we returned to Ujung Alang, Kampung Laut to shoot more footage. We planned to screen the draft film and hold focus group discussions through semi structured key questions to engage the community (see box for detailed questions).

Beyond our expectations, the communities in Ujung Alang and Motean were very enthusiastic in watching the draft film. We harvested meaningful comments from the community after the screening was completed.

Both of screening activities in Ujung Alang and Motean went well respectively followed with focus group discussion. It was interesting to observe the gestures and spontaneous reactions from the community in relating to their daily problems as presented in the film (the results of FGD can be reviewed in the following flowchart).



Other than the useful and spontaneous comments, there were a lot of community members who expressed their interest to help with tracking down resource persons, guiding the film crew to find them and other logistical tasks.



The main impact notable from the public screening exercise was community's acknowledgement to film crew's presence and their openness to participate in the process of film making. Good rapport was also started with resistant groups among the Kampung Laut community.



### **Objectives of Focus Group Discussions (FGD)**

1. To find the response from the community of Ujung Alang regarding the draft film to be screened;
2. To collect responses and aspiration from Ujung Alang community about priority issues they need to address in their daily life;
3. To develop a common understanding between the community of Ujung Alang – Kampung Laut and the film crew regarding the content of the film.

### **Key questions of the Focus Group Discussion**

1. Do you feel that the film depicts the situations and nuances of daily life of Kampung Laut community (especially the community of Ujung Alang village)? If it does not represent the daily life then what are those aspects that need to be included in the film?
2. Is/are there any issues in Ujung Alang (Kampung Laut) that would be significant to be presented in the film? Why those issues need special attention in the film?
3. If the film is finished, for what purpose you would use the film for?

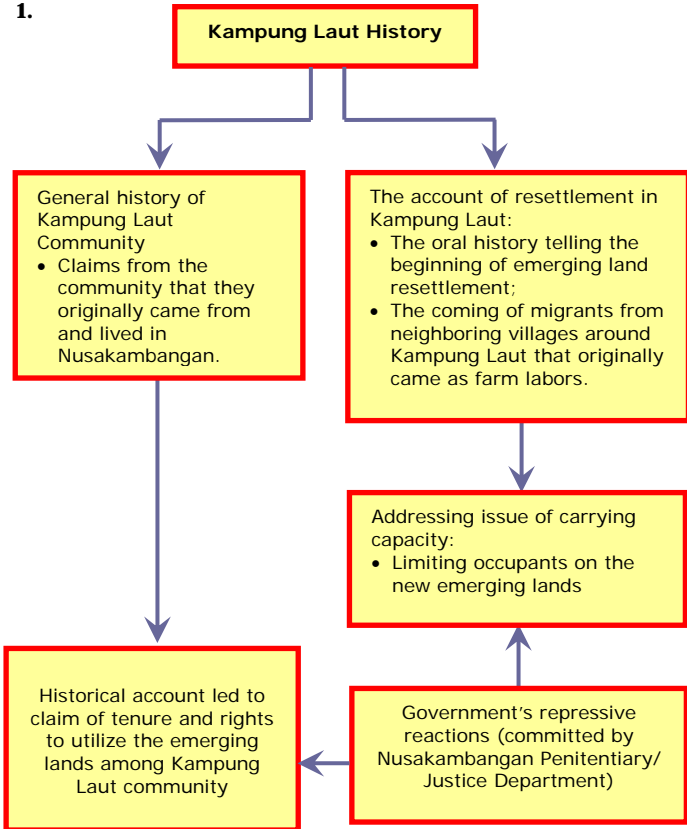
### **List of Participants attended the FGD**

1. Village government officers of Ujung Alang
2. Mekar Sari Farmers Group (Gragalan – Motean)
3. Calung Wahyu Langen Tirto Community Group (Motean)
4. Mr. Darmono (Currently farmer/fisher used to be, Coordinator of Customary Groups in Kampung Laut Sub District – Mangunjaya)
5. Mrs. Tukijah (Currenty farmer/fisher used to be, Woman Activist of Lempongpucong)
6. Mrs. Tati (Primary School Teacher, Woman Activist KPI – Lempongpucong)
7. Mr. Yusmanto (Junior High School Teacher, Activist – Motean)
8. Mr. Sugeng (Primary School Teacher – Pasuruan)
9. Mr. Toro (Youth Activists – Motean)
10. Coastal Watch Group/Kelompok Jaga Laut (Motean)
11. Krida Utama Community Group (Motean)
12. Representative of fisher folk association in Motean
13. Representative of migrant community in Sigitseta, Mangunjaya, Ketapang, and Pasuruan
14. Kadus Lempongpucong

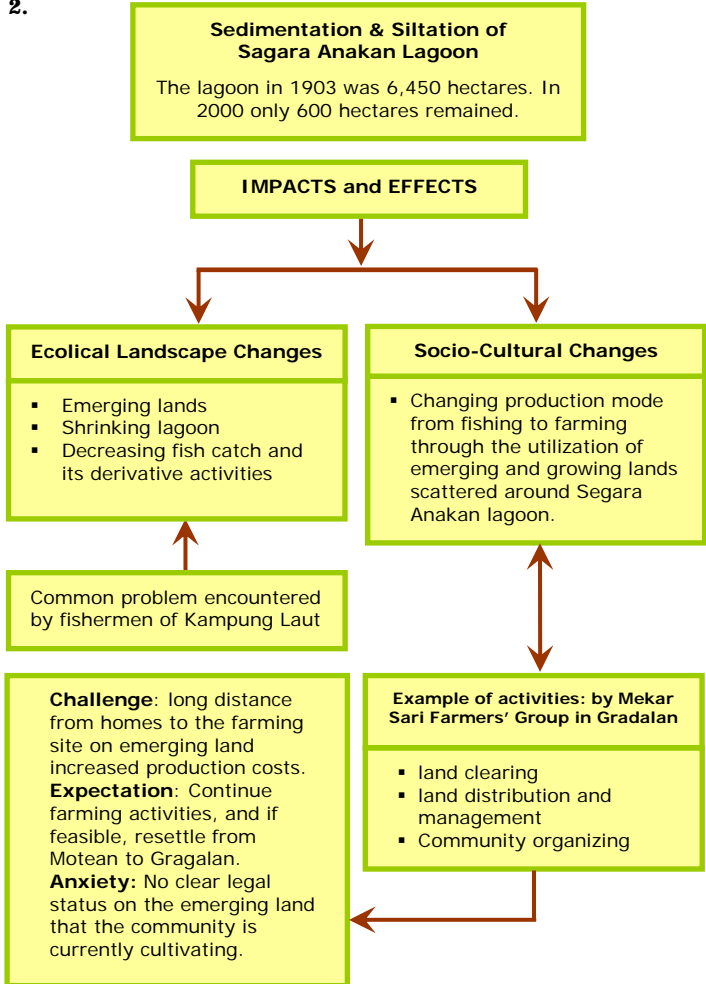


**Focus Group Discussion Results:  
Scope of problems in Ujung Alang, Kampung Laut  
as told in the story flow of the film**

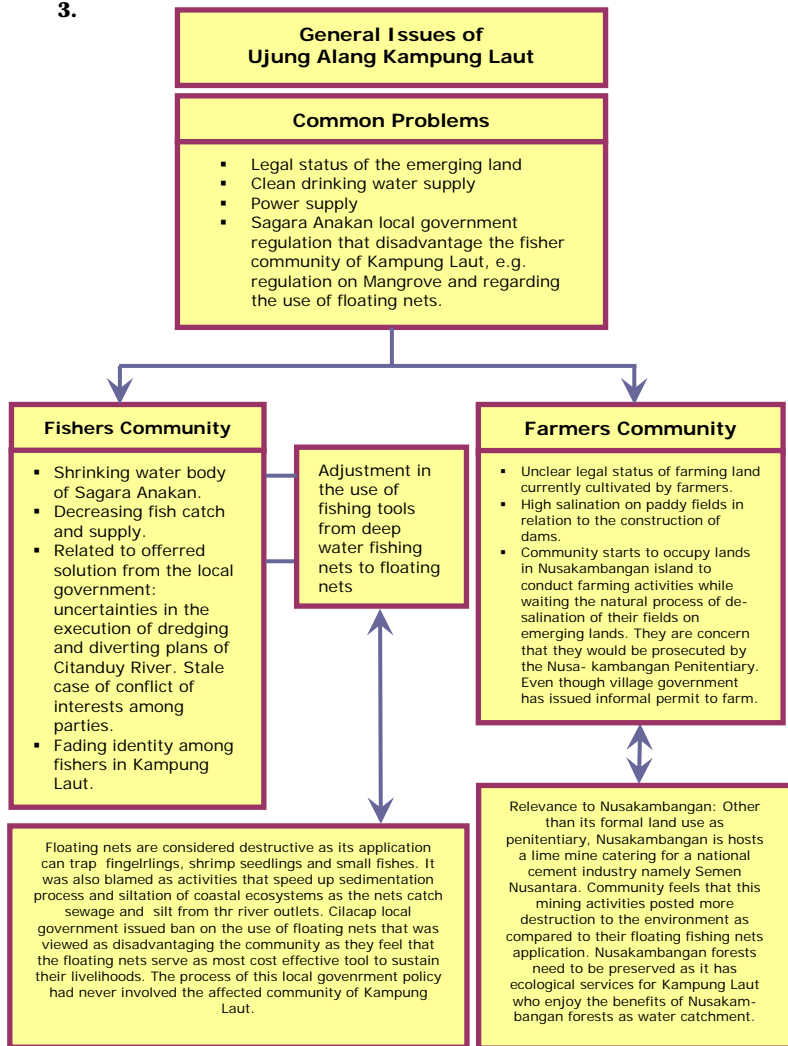
1.



2.

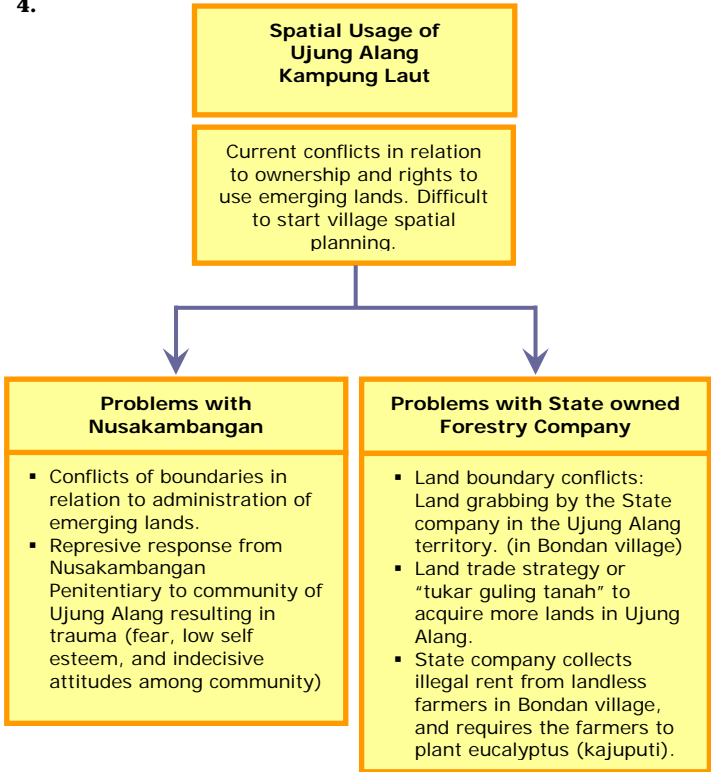


### 3.





4.



5.

### EDUCATION

Primary Schools in Kampung Laut: 8  
in Ujung Alang: 2  
Junior Highs in Kampung Laut: 3  
in Ujung Alang: 1  
High Schools in Kampung Laut: 1  
In Ujung Alang: none  
Literacy Courses: B & C (in Panikel)

### Main Issues

Poor education facility and access to education in Ujung Alang.

### Problems and Constraints

- Geographical factor:
  - Schools are far away from home especially for primary school students. Must cross the sea or river.
- Economy factor:
  - Impoverished community unable to send kids to school and purchase books and other schools requirements.

### Expectations and Anxieties

- Kids of Ujung Alang can go to schools and that the education facility can be improved in di Ujung Alang;
- Emergence of community's awareness on the importance to have access to education for Ujung Alang Kids;
- Improved teachers' welfare in Ujung Alang so that the current short term based teachers can be scaled up to permanent civil servants under the Education Ministry care.

## Story Flow

*Laut yang Tenggelam* or the Sinking Sea is a feature length documentary of 94 minutes. To reduce boredom and to ensure the messages of the film conveyed to the audience, we presented the film as sequels.

There are 10 sequels in the following themes:

1. Opening : *Dangdanggula* Kampung Laut (Javanese Folk Song of Kampung Laut)
2. Sedimentation, Emerging Lands
3. From Fishers to Farmers
4. Land conflict with Nusakambangan
5. Agriculture, Dams, Salty Water
6. Motean Village
7. Expansion to Nusakambangan
8. Education
9. Conflict with Perhutani
10. Ending: *Sinom Nya'mat* Kampung Laut (Javanese Folk Song of Kampung Laut)

We hope that by dividing the film into sequels, the whole story can be presented and viewed without painful learning while keeping the initial intention to make this an educational film to be studied in less complicated ways.



# Film Credits

## “Laut yang Tenggelam”

<b>Moh. Syafari Firdaus</b> , Producer, Executive Producer, Editor; <b>KoPI</b>			<b>Siti Hapsari</b> , Co-producer, Executive Producer, <b>KBH Purwokerto</b>
<b>Yuslam Fikri Ansari</b> ( <b>Yufik</b> ), Director, Camera Person, Editor; <b>KoPI</b>			<b>Surtini Hadi</b> , Logistic <b>KBH Purwokerto</b>
<b>Suherman</b> , Camera Person <b>KoPI</b>			<b>Tati Sudarno</b> , Logistic <b>Ujung Alang</b>
<b>Dhini Yulietta Sari</b> , Researcher <b>KoPI</b>			<b>Edi Riyanto</b> Driver <b>Ujung Alang</b>

### Thanks to:

**Global Greentrants Fund (GGF)**  
**Noer Fauzi**  
**Bu Tati and family**  
**Gragalan Mataram Farmers Group**  
**T o r o**  
**Pak Darmono**  
**Calung Wahyu Langen Tirto Community Group**  
**Ujung Alang Village Community**  
**Ujung Alang Village Government**  
**Community of Kampung Laut Sagara Anakan**  
**Sketsa Pojok (Skepo)**



**Jl. Sukabumi Dalam 164 Bandung 40271**  
**Phone/Fax +62 22 721.2169**  
**E-mail : kopidokumenter@yahoo.co.id**